

# LIGHTOLIER® Deepcel Plus DPA2G9LP317 or 32U

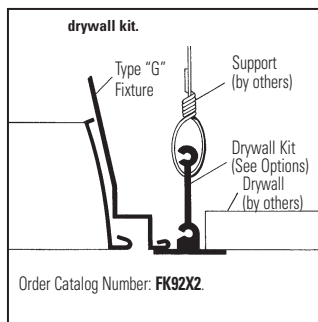
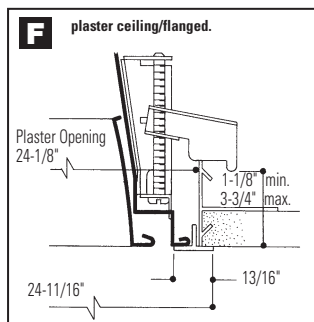
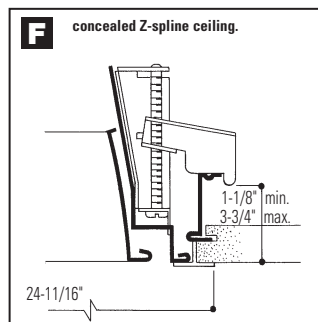
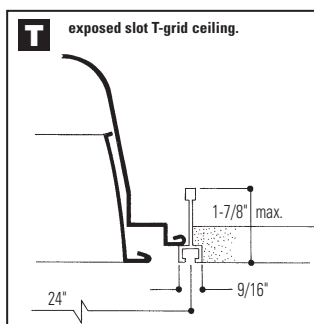
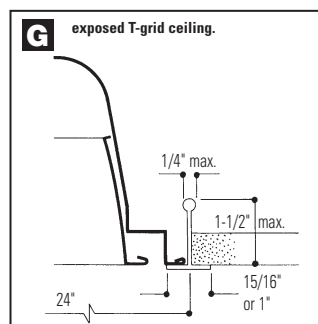
Page 1 of 2

2' x 2' Recessed Fluorescent, 3", 9 Cell Parabolic Louver  
Static or Air Supply/Return, 3 Lamp 1-5/8"U T8 or 2' Lamp T8

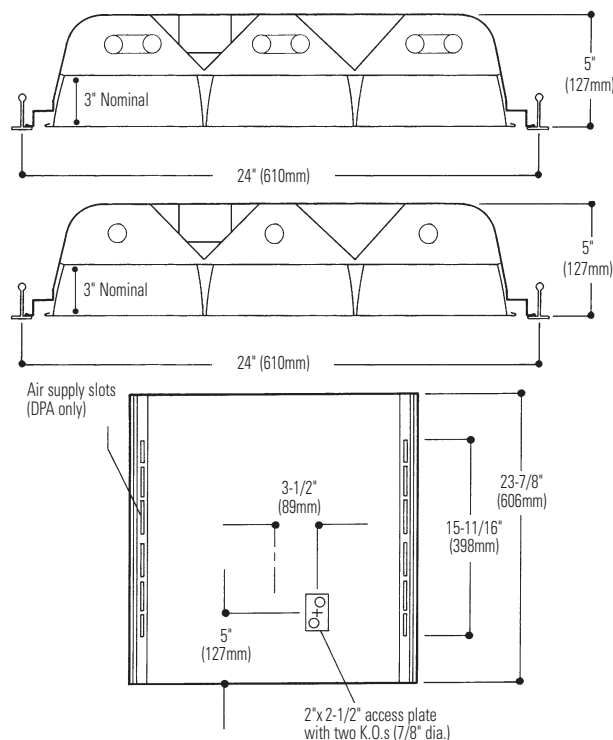
- 5" deep body.
- Individual lamp compartments.
- 63.4% efficient (3-1-5/8"U lamp).
- Clean contoured interior.
- Eyeleted heat removal vents in fixture ends.
- One piece housing.
- Black exterior for cooler ballast operating temperature.
- Hemmed over side rails for safe handling.
- Fixture ends turned-in for safe handling.
- Built-in earthquake clips.
- Pre-anodized aluminum parabolic louver.
- Vertical grain louver eliminates reflected lamp images on cross baffle.
- Spring loaded latches.
- 18 gauge steel hinges.
- Louver frame with integral positive light stop.
- Louver has protective film dust guard.
- Construction to meet NYC Code or Chicago Plenum requirements is available.



## Mounting Methods



## Dimensions



## Job Information

## Type:

**Job Name:**

**Cat. No.:**

**Lamp(s):**

**Volts/Ballast:**

For Factory Technical Information: (978) 657-7600 • Fax (978) 658-0595  
631 Airport Road, Fall River, MA 02720 • (508) 679-8131 • Fax (508) 674-4710  
We reserve the right to change details of design, materials and finish.  
www.lightolier.com © 2009 a Philips Group

09/09

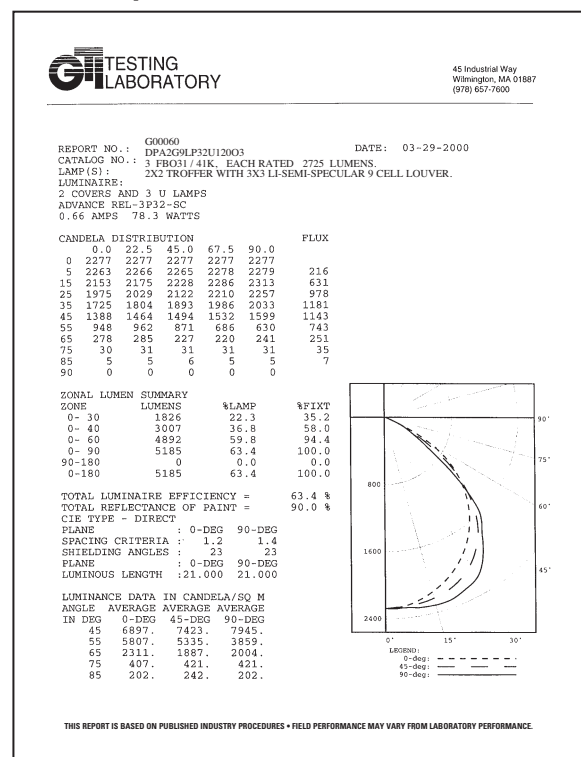
Section 2/Folio G51-26 Rev. B

# LIGHTOLIER® Deepcel Plus DPA2G9LP317 or 32U

Page 2 of 2

## Photometry

Model No. DPA2G9LP32U12003



2' x 2' Recessed Fluorescent, 3", 9 Cell Parabolic Louver  
Static or Air/Return, 3 Lamp 1-5/8"U T8 or 2' Lamp T8

LER = FP - 56.2 IW - 57.2 BF - 0.87

Comparative yearly lighting energy cost per 1000 lumens = \$4.27

### coefficients of utilization — zonal cavity method

	RF	20			20			20		
		RC			50			30		
	RW	70	50	30	50	30	10	50	30	10
room cavity ratio	1	71	68	66	64	63	61	62	61	59
	2	65	61	58	58	55	53	56	54	52
	3	60	55	51	52	49	46	50	48	45
	4	56	49	45	47	43	40	46	42	40
	5	52	45	39	43	38	35	41	38	35
	6	48	40	35	39	34	31	38	34	31
	7	45	37	32	35	31	28	34	31	28
	8	42	34	29	32	28	25	32	28	25
	9	39	31	26	30	26	23	29	25	23
	10	36	29	24	28	24	21	27	23	21

### visual comfort probability (VCP) average 100 fc; reflectances 80/50/20

room size		ceiling height				ceiling height			
W	L	8.5	10.0	13.0	16.0	8.5	10.0	13.0	16.0
20	20	67	60	55	62	70	65	62	61
20	30	70	64	56	53	73	68	62	58
20	40	73	67	60	55	76	70	65	60
20	60	75	69	63	59	77	72	68	63
30	20	72	66	58	61	75	69	63	61
30	30	75	68	59	53	77	71	63	58
30	40	77	71	63	56	79	73	67	60
30	60	78	73	66	59	80	75	69	63
30	80	80	75	68	62	81	77	71	65
40	20	75	69	63	63	78	72	67	62
40	30	77	71	63	56	79	74	67	59
40	40	79	73	66	58	81	76	69	61
40	60	80	75	69	61	82	77	72	63
40	80	82	77	71	63	83	79	73	66
40	100	83	78	73	66	84	80	75	68
60	30	79	74	67	59	81	76	70	62
60	40	80	76	69	61	82	78	72	63
60	60	82	77	71	63	83	79	74	66
60	80	83	79	73	66	84	80	75	68
60	100	83	80	75	68	85	81	77	70
100	40	81	77	72	65	83	79	74	67
100	60	82	78	74	67	84	80	76	69
100	80	84	80	75	69	85	81	78	71
100	100	84	81	77	71	86	82	79	73

## Ordering Information

Explanation of Catalog Number. Example: DPA2G9LP32UUNVH3

Deepcel Plus Parabolic: Pre-anodized aluminum louver	Body Style: A=Air Supply S=Static	2	9	L = Low iridescence Semi-specular (standard) P = Low iridescence Specular W = White Baked Polyester Powder	Dual "V" Reflectors	3	Lamp Type/ Fixture Length: 2U = T8 1-5/8"U Lamp (Nominal 24") Note: For Linear T5 Lamp option, consult factory	Voltage: 120, 277 or UNV=120-277	Ballast Type: <20THD S0 * H1 * <10THD O3 * H3 * PS -	Options: Add appropriate suffix to catalog no., ie: (C)
DP	Standard Deepcel									
DY	For NYC Code — I.B.E.W. Manufactured									
ND	For NYC Code — Local 3 Manufactured 5½" Deep Body									

## Options/Accessories

Plaster Frame: Catalog Number: PF22

Continuous Row Installation: For F type fixtures, half width flanges are required between fixtures. Order Catalog Number: ZFC TRIM CSP (each joint).

Radio Interference Filter: To order one RIF per fixture; SUFFIX: R.

To order one RIF per ballast; SUFFIX: B.

Electrical Wiring Options: Consult factory.

Air Closure Strip: SUFFIX: ACS2 (factory installed).

Drywall Kit: Order Catalog Number: FK92X2. (Request Folio OA30-10 Rev. A).

Chicago Plenum: SUFFIX: C.

## Specifications

**Performance:** In an installation of 3 lamp 31W luminaires in a room cavity ratio of 1, reflectance 80% ceiling, 50% wall, 20% floor, the C.U. shall not be less than .68. To prevent glare the VCP shall be not less than 82 either lengthwise or crosswise (at 100fc level) and the average brightness at 65° shall not exceed 2311 candelas per square meter. To control veiling reflections, luminaire output in the 30°-90° zone shall not be less than 64.8%.

**Air Handling** (DPA only) side air passages for air supply or air return. Supply air is discharged vertically. Optional side closure strips. Air return is also provided through the lamp compartment through fixture body ends.

**Materials:** Chassis parts are die-formed code gauge cold rolled steel. Housing is ribbed for rigidity with side rails hemmed over and housing ends turned-in for safe handling. Louver is pre-anodized aluminum.

## Specifications (continued)

**Finish:** Chassis exterior—black baked polyester enamel. Cavity—white baked polyester enamel minimum 86% reflectance. Rust preventative undercoating. Louver—low iridescence semi-specular anodized vertical grain aluminum reflector sheet is standard.

**Electrical:** Thermally protected class "P" ballast C.B.M. approved, non PCB. If K.O. is within 3" of ballast, use wire suitable for at least 90°.

**Labels:** I.B.E.W. UL and ULc Listed. UL listed for damp locations.

This product may have a mercury containing lamp.

Manage in accord with Disposal Laws. See: www.lamprecycle.org

## Job Information

## Type:

For Factory Technical Information: (978) 657-7600 • Fax (978) 658-0595  
631 Airport Road, Fall River, MA 02720 • (508) 679-8131 • Fax (508) 674-4710

We reserve the right to change details of design, materials and finish.

www.lightolier.com © 2009 a Philips Group

Section 2/Folio G51-26 Rev. B

Lightolier is a Philips group brand

PHILIPS